



# “eduroam” Configuration Manual

## For Windows 7

### 1. Open ‘Network and Sharing ‘





## 2. Go to 'Manage Wireless Networks'

Control Panel Home

**Manage wireless networks**

Change adapter settings  
Change advanced sharing settings

View your basic network information and set up connections

SAAD-PC (This computer) Smart University NOC Internet

View your active networks

Smart University NOC  
Public network

Access type: Internet  
Connections: Wireless Network Connection (Smart University NOC)

Change your networking settings

- Set up a new connection or network  
Set up a wireless, broadband, dial-up, ad hoc, or VPN connection; or set up a router or access point.
- Connect to a network  
Connect or reconnect to a wireless, wired, dial-up, or VPN network connection.
- Choose homegroup and sharing options  
Access files and printers located on other network computers, or change sharing settings.
- Troubleshoot problems  
Diagnose and repair network problems, or get troubleshooting information.

## 3. Click on 'Add'

File Edit View Tools Help

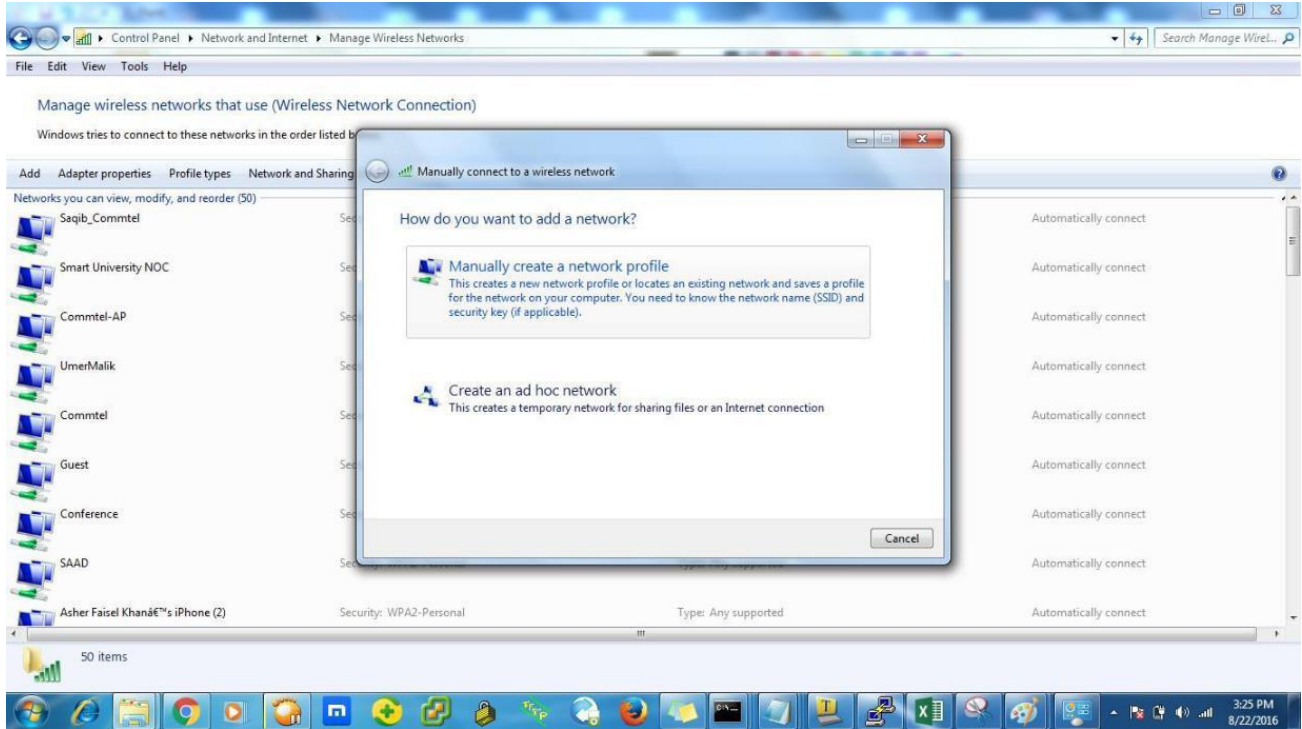
Manage wireless networks that use (Wireless Network Connection)

Windows tries to connect to these networks in the order listed below.

Add	Adapter properties	Profile types	Network and Sharing Center
Net Add a wireless network by, and reorder (50)			
Saqib_Commte1		Security: WPA2-Personal	Type: Any supported
Smart University NOC		Security: WEP	Type: Any supported
Commte1-AP		Security: WPA2-Personal	Type: Any supported
UmerMalik		Security: WPA2-Personal	Type: Any supported



#### 4. Choose 'Manually Create a network profile'





5. On network name write “eduroam”
6. Security type ‘WPA2-Enterprise’
7. Encryption Type ‘AES’
8. Leave Security Key ‘Blank’
9. Click on ‘Next’

The screenshot shows a Windows Network Setup window titled "Manually connect to a wireless network". The window contains the following fields and options:

- Network name:** A text box containing "eduroam".
- Security type:** A dropdown menu set to "WPA2-Enterprise".
- Encryption type:** A dropdown menu set to "AES".
- Security Key:** An empty text box. To its right is a checkbox labeled "Hide characters" which is unchecked.
- Start this connection automatically:** A checked checkbox.
- Connect even if the network is not broadcasting:** An unchecked checkbox. Below it is a warning: "Warning: If you select this option, your computer's privacy might be at risk."

At the bottom right of the window, there are two buttons: "Next" (highlighted in blue) and "Cancel".



## 10. Go to 'Change Connection Setting'

