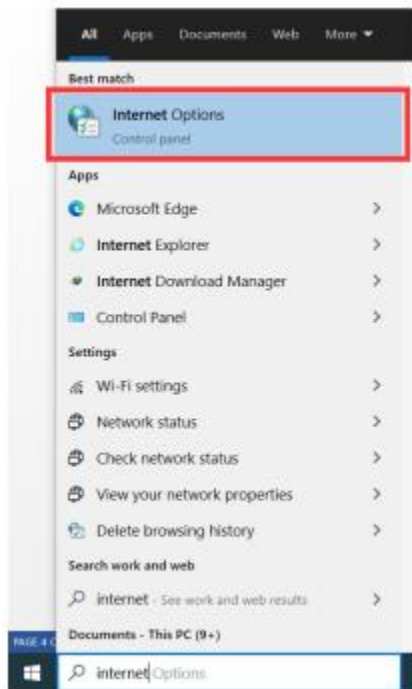
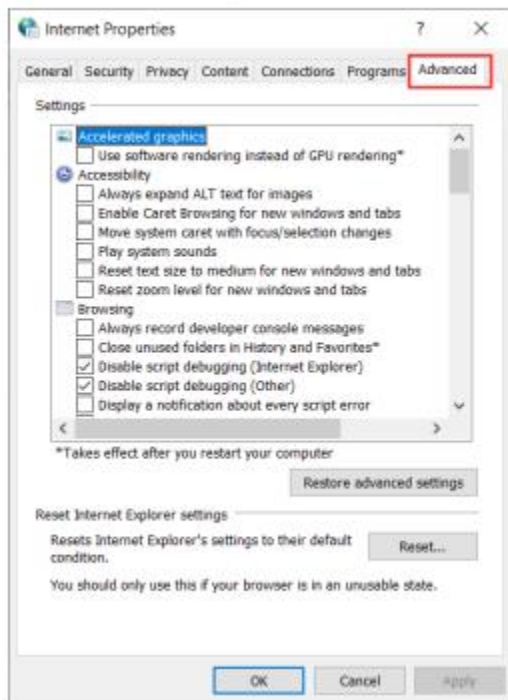


(A) Following is the procedure to access / use the PU VPN services on Laptop / Desktop computer;

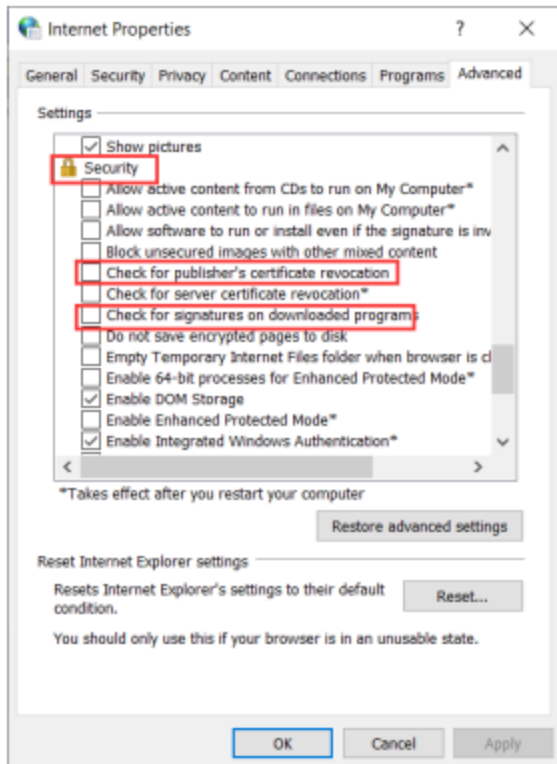
1. Go to the Internet Option " type internet option in run "



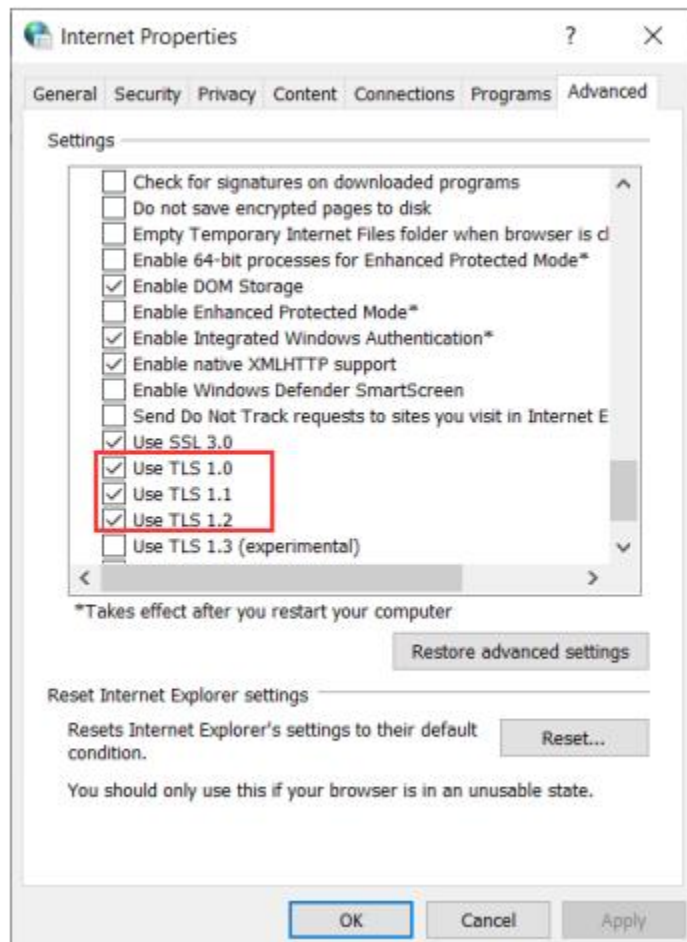
Select Advanced Option



Scroll down to Security option and disable/uncheck the following Options.

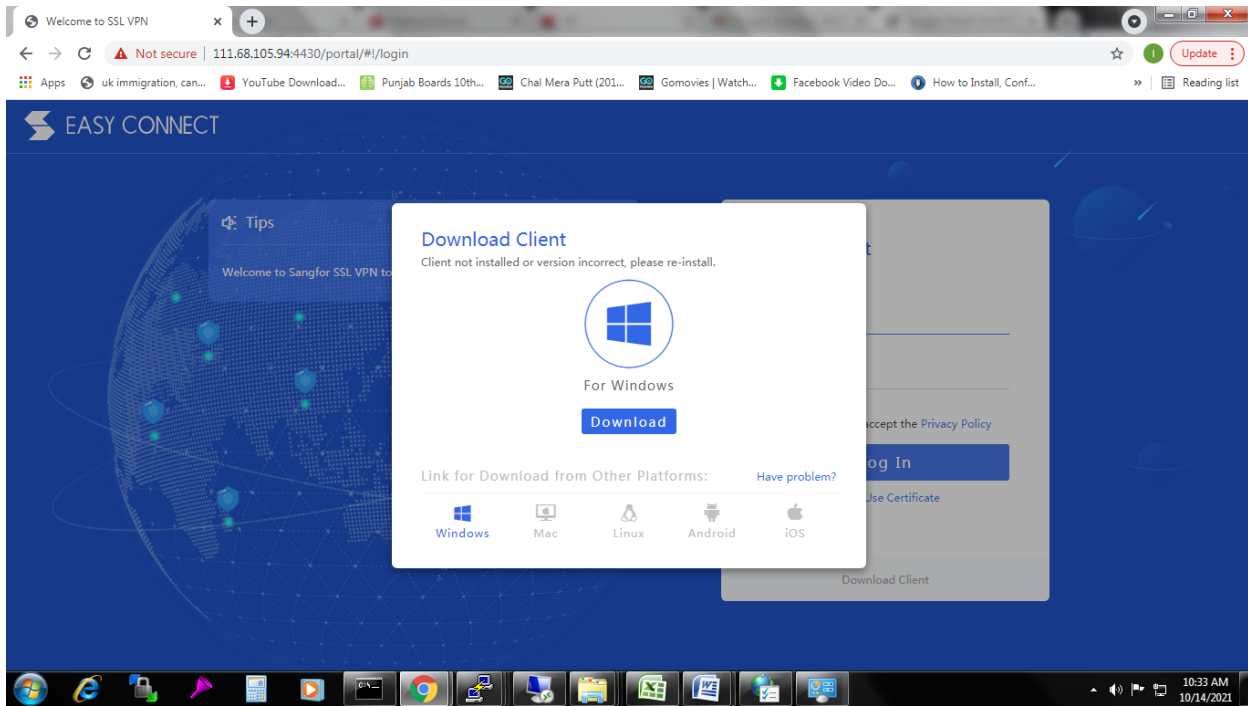


Further Scroll down in Security and Enable/check the following Options.

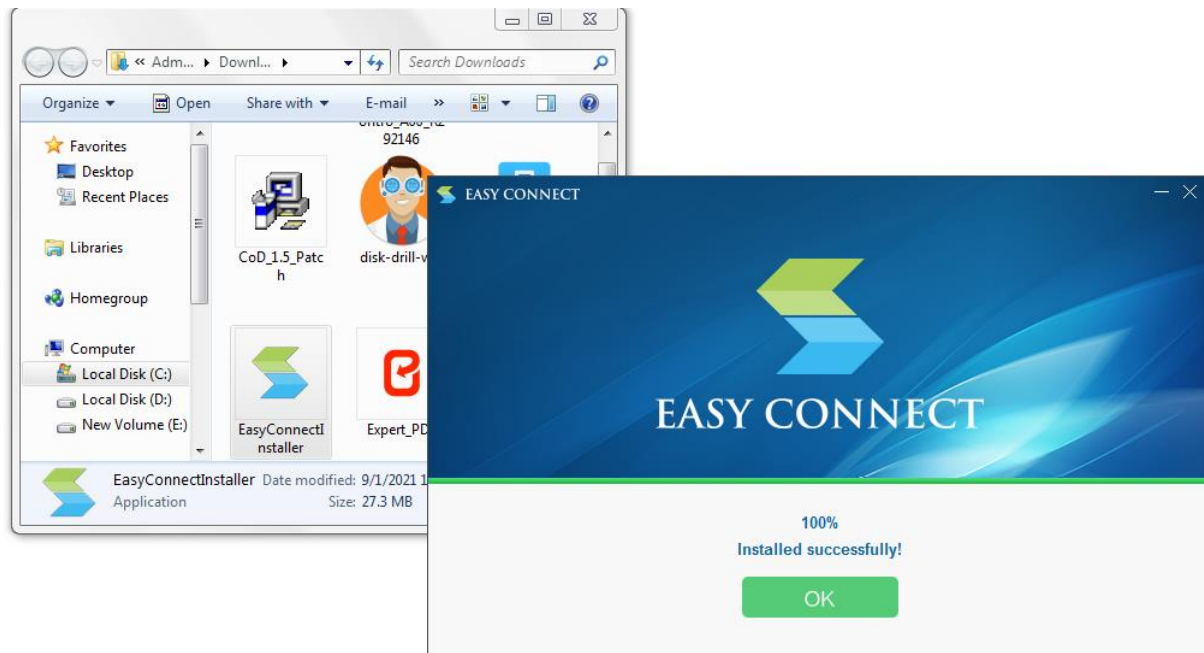


2. Access <https://111.68.105.94:4430> in web browser. (chrome, internet explorer, Firefox etc...)

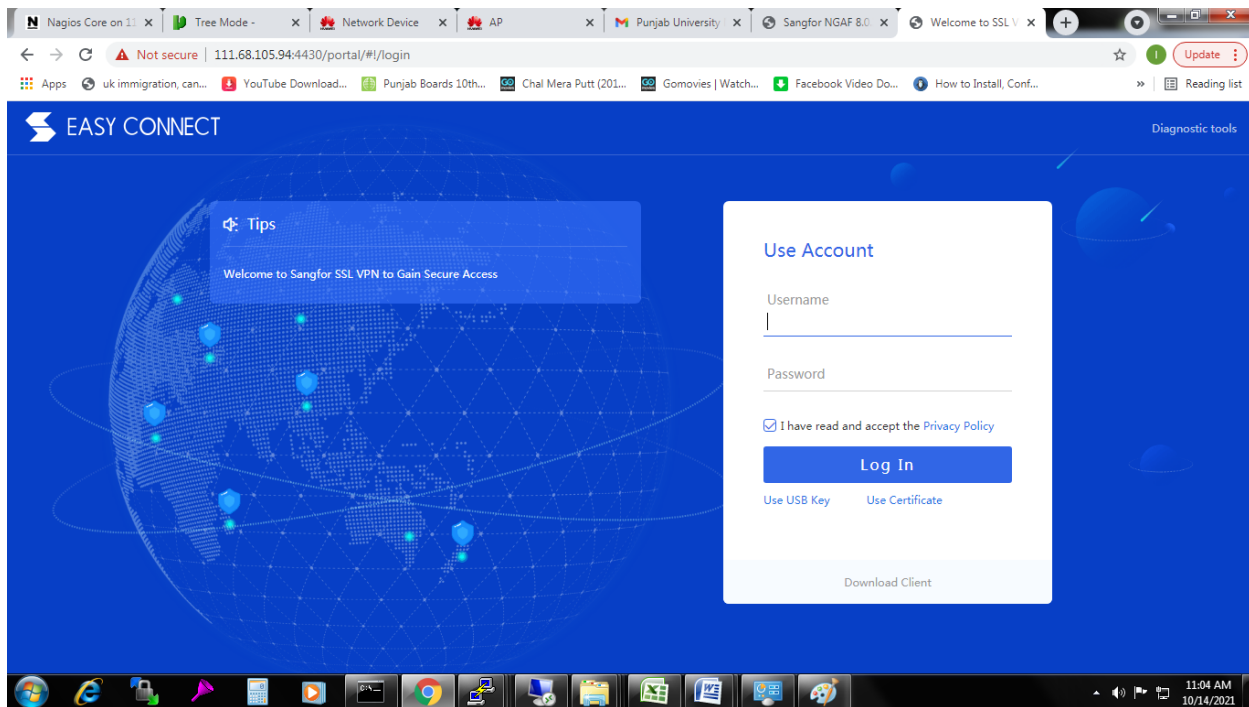
the following screen will appear.



2. Download & install the above client as follows.



3. After installation the VPN client following Login Screen will appear

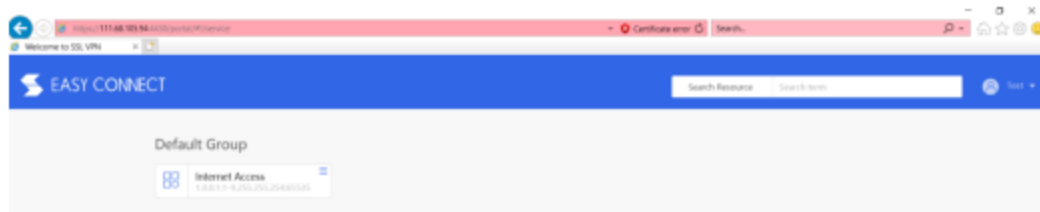


Enter your email as username and already-communicated password

this is mandatory to change default password at first login

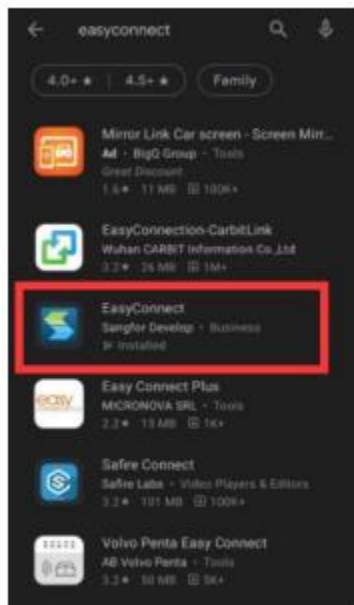
A screenshot of a 'Change Password' dialog box. The title is 'Change Password'. Below the title, it states: 'Initial password must be changed on first login for the sake of account security.' This is followed by a list of requirements: 'It should contain at least 6 characters.', 'It cannot contain username.', and 'Password must contain digit'. There are two input fields: 'New PWD' and 'Retype Password', both with masked characters (dots). At the bottom, there is a large blue button labeled 'OK'.

After Selecting Ok. User can access resources via SSL VPN.

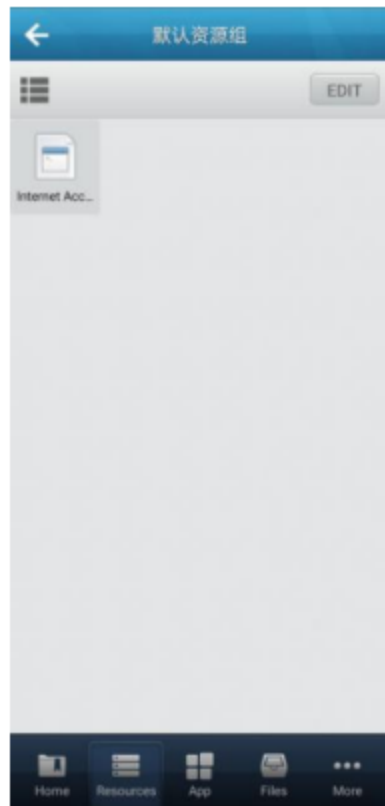


(B) Following is the procedure to access / use the VPN services on Mobile;

1. Download Easy Connect APP from play store.



After Log IN Successfully, User is good to access PU Internet.



Note: Above screen indicates that user has successfully logged into PU VPN.