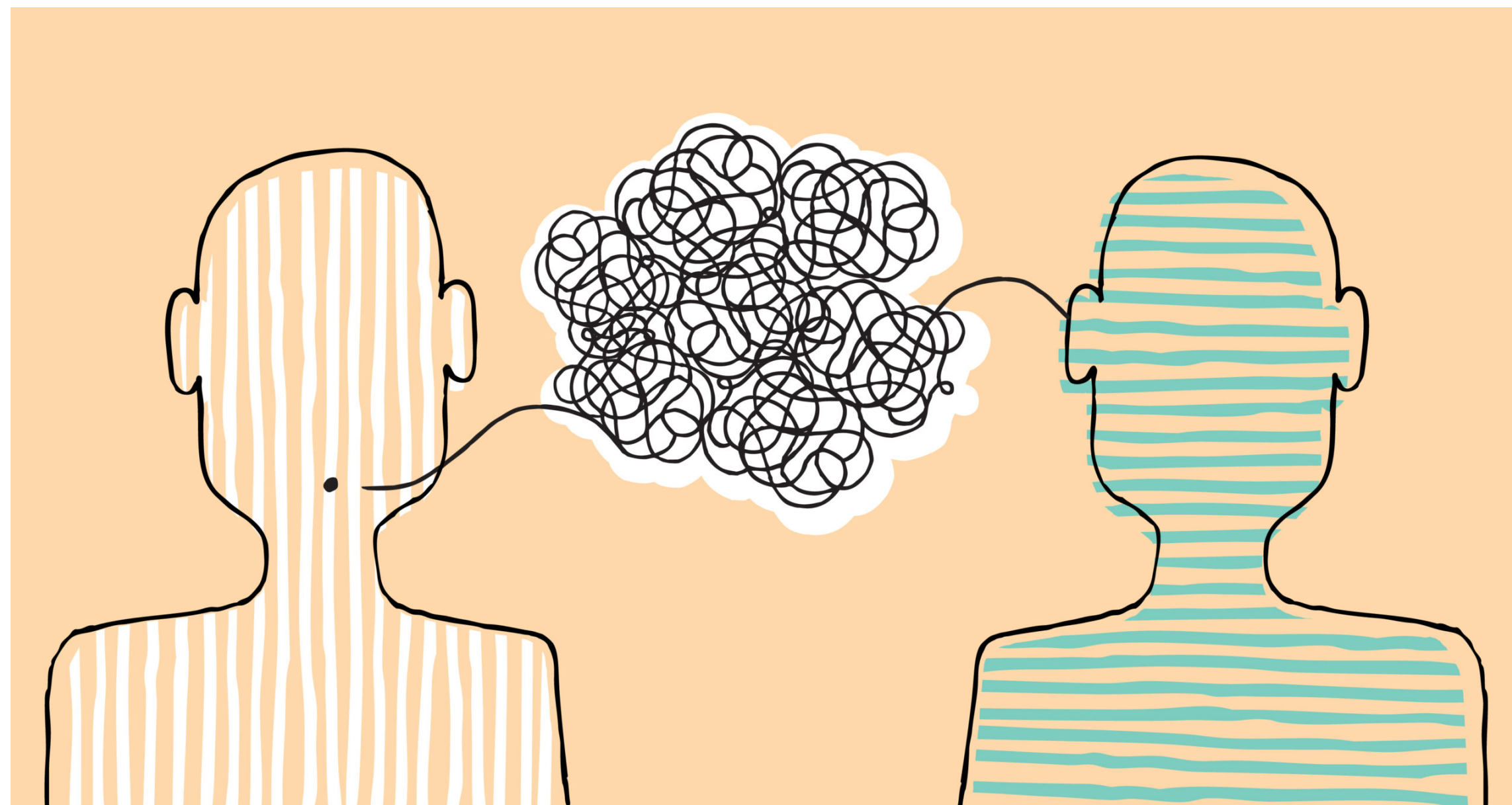


Seminar Invitation: Study of Sutterby Nanofluid Flow over a Riga Plate

Speaker: **Sidra Qayyum** from Department of Mathematics, University of the Punjab, Lahore

Speakers' Brief Introduction

Ms. Sidra Qayyum is an MPhil Scholar working under the supervision of Dr. Aziz Ullah Awan. The field of research of a student is Applied Mathematics, specializing in Fluid Mechanics.



Abstract

The goal of this investigation is to examine Sutterby nanofluid flow across a Riga plate. This study is done by utilizing the well-known Tiwari and Das nanofluid model and taking the magnetohydrodynamics effect into consideration. Through the use of similarity transformation, the governing PDEs are converted into non-linear ODEs. The bvp4c solver in MATLAB software is used to evaluate the resulting ODEs. The impacts of several physical variables such as the heat source/sink, Reynold number, and Deborah number on temperature and velocity profiles have been examined, and graphically displayed. Moreover, the local Nusselt number and skin friction coefficient are studied in depth.

Departmental Seminar Series

The Seminar Series serves as a platform to showcase and celebrate the remarkable work carried out by our researchers, scholars, and experts. It provides an avenue for knowledge dissemination and collaboration, creating an environment that nurtures innovative ideas and drives groundbreaking research. We proudly acknowledge and celebrate the remarkable contribution of Prof. Dr. Muhammad Sharif in introducing this seminar series back in 2005. The Seminar Series encompasses a wide range of topics, spanning various disciplines, ensuring that it caters to the diverse interests and expertise of our institute's community. Through these seminars, we aim to cultivate an environment of intellectual curiosity, stimulating meaningful discussions, and fostering interdisciplinary collaborations.



Please join us for this Presentation

When: Friday 7th July 2023; 02:45PM- 03:00PM

Where: Computer Lab, Department of Mathematics, University of the Punjab, Lahore

Note: All the faculty members and research scholars (MPhil/PhD) are invited to the seminar.

Chairman Message



It is my honor to witness the passion and dedication that our faculty and students bring to the study of this beautiful discipline. I encourage our faculty members to create a supportive environment that nurtures and promotes mathematical research. I urge each and every one of you, regardless of your level of experience, to actively participate in mathematical research and contribute to the growth of our research community. It is our collective responsibility to create an ecosystem that encourages and facilitates research pursuits.

Coordinator Departmental Seminar Series

Dr. Zeeshan Yousaf

Associate Professor

Department of Mathematics, University of the Punjab, Lahore